

EDIFICAÇÃO PÚBLICA - AMPLIAÇÃO

Prefeitura  
Municipal de

**Rolante**

Projeto Estrutural

obra:

Casa da Colônia

material:

Alvenaria

local:

Av. Getúlio Vargas, 131 - Centro

prancha:

Vigas Superiores

n°:

VS 01

extensão/área:

259,94 m<sup>2</sup>

escala:

indicada

unidade:

centímetro

data:

Abril/2020

proprietário:



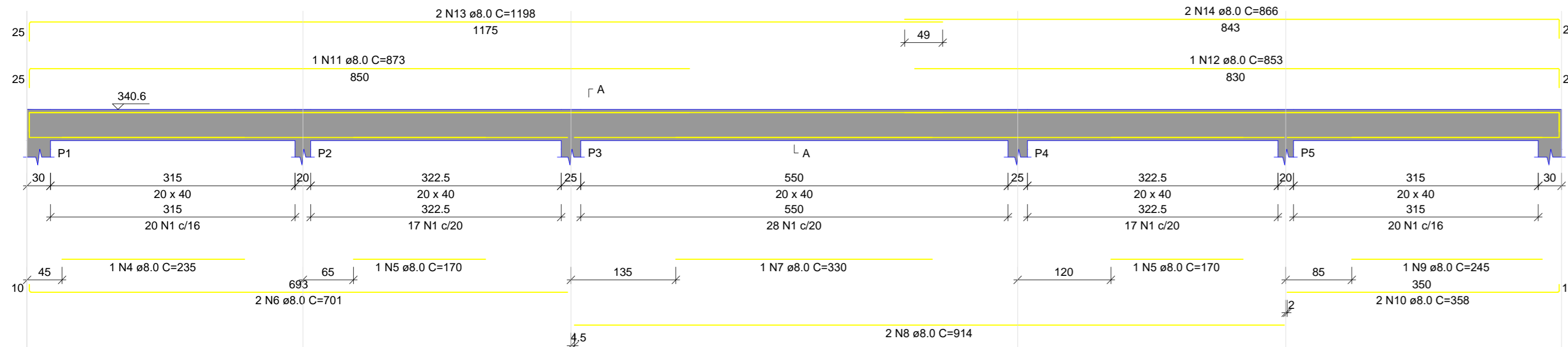
*Régis Luiz Zimmer*  
Régis Luiz Zimmer  
Prefeito Municipal

responsável técnico:

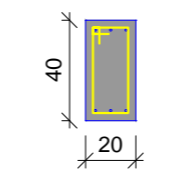
*Jainara Fischer*  
Jainara Garcia Fischer  
Eng. Civil CREA/RS 237284

**VS1**

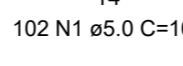
ESC 1:50



SEÇÃO A-A  
ESC 1:30

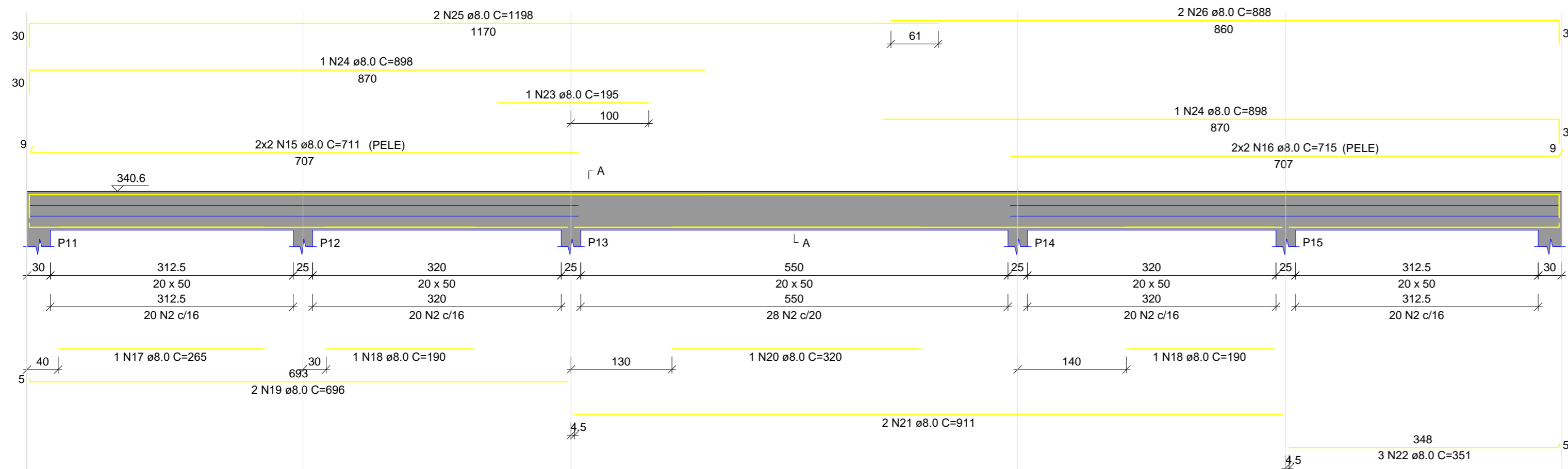


SEÇÃO A-A  
ESC 1:30

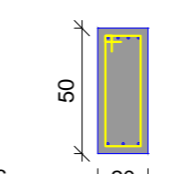


**VS2**

ESC 1:50



SEÇÃO A-A  
ESC 1:30

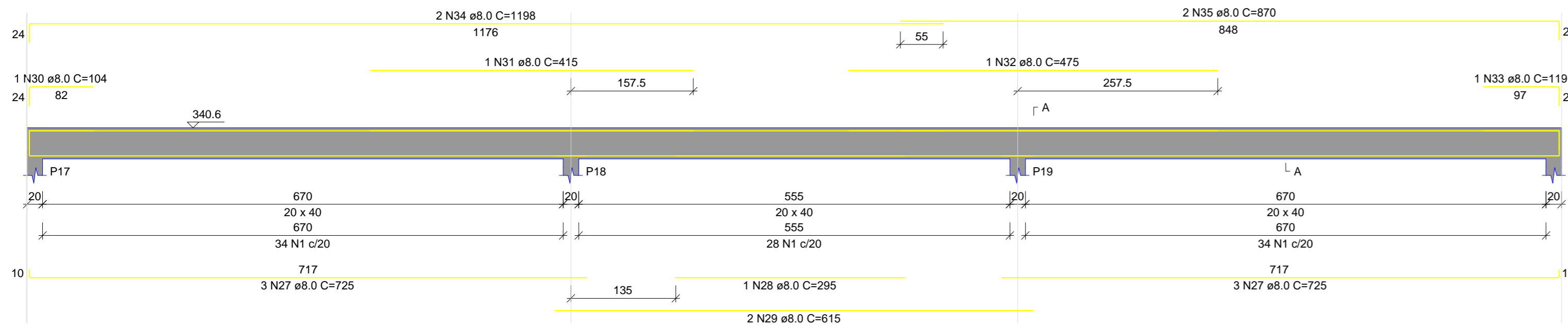


SEÇÃO A-A  
ESC 1:30

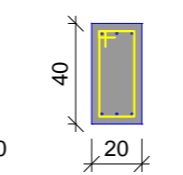


**VS3**

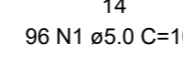
ESC 1:50



SEÇÃO A-A  
ESC 1:30

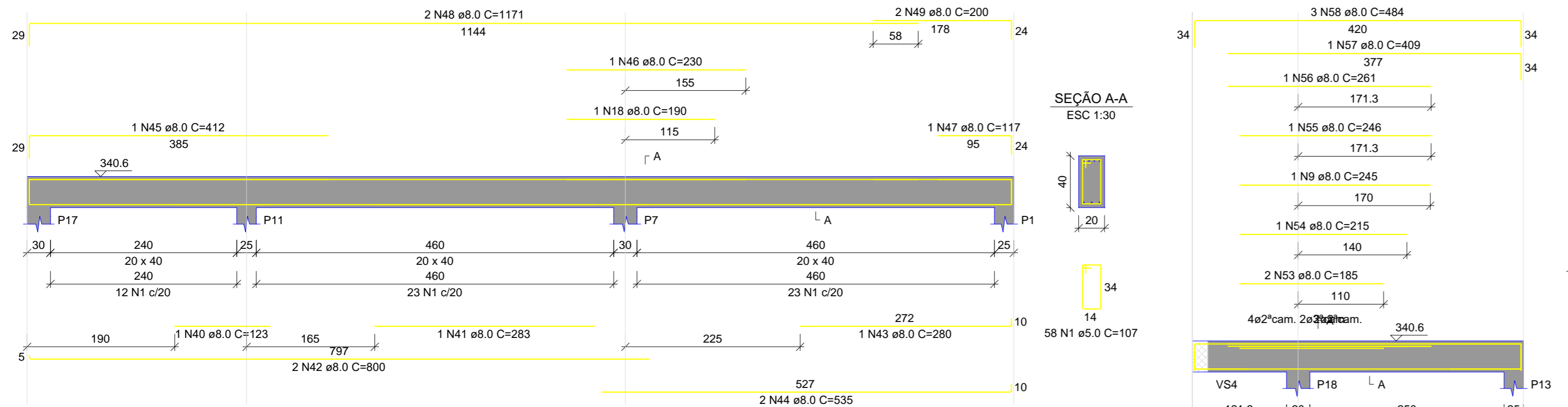


SEÇÃO A-A  
ESC 1:30

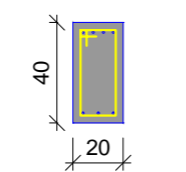


**VS5**

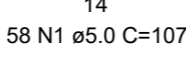
ESC 1:50



SEÇÃO A-A  
ESC 1:30

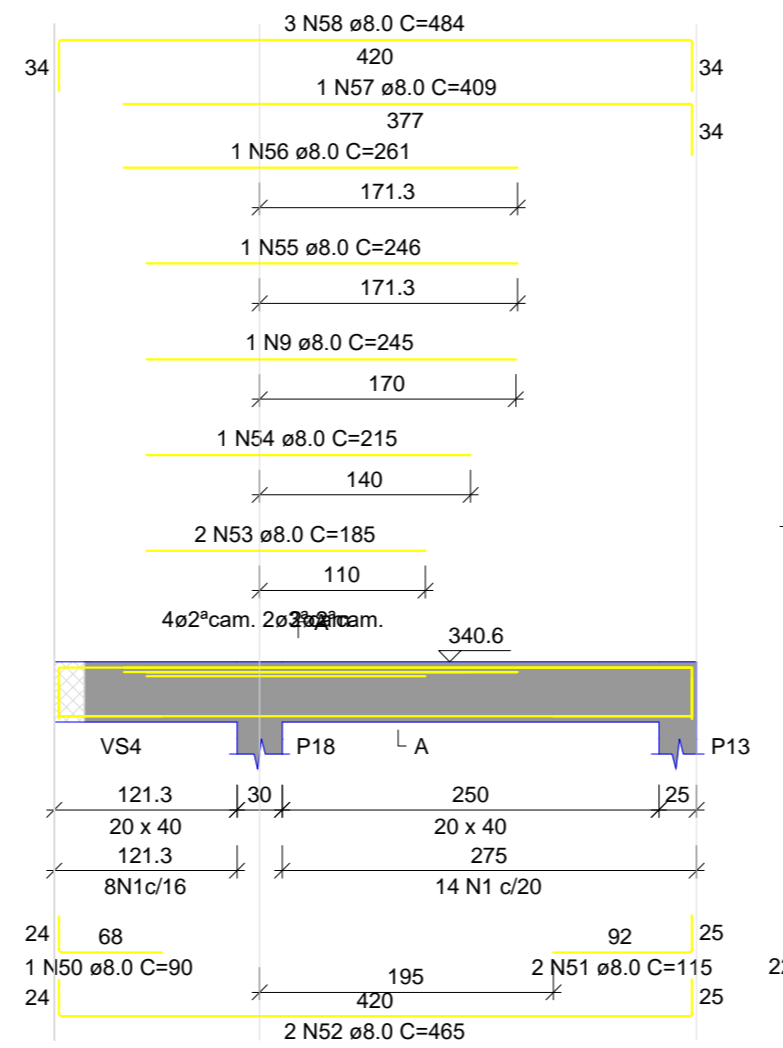


SEÇÃO A-A  
ESC 1:30

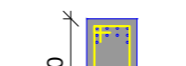


**VS6**

ESC 1:50



SEÇÃO A-A  
ESC 1:30

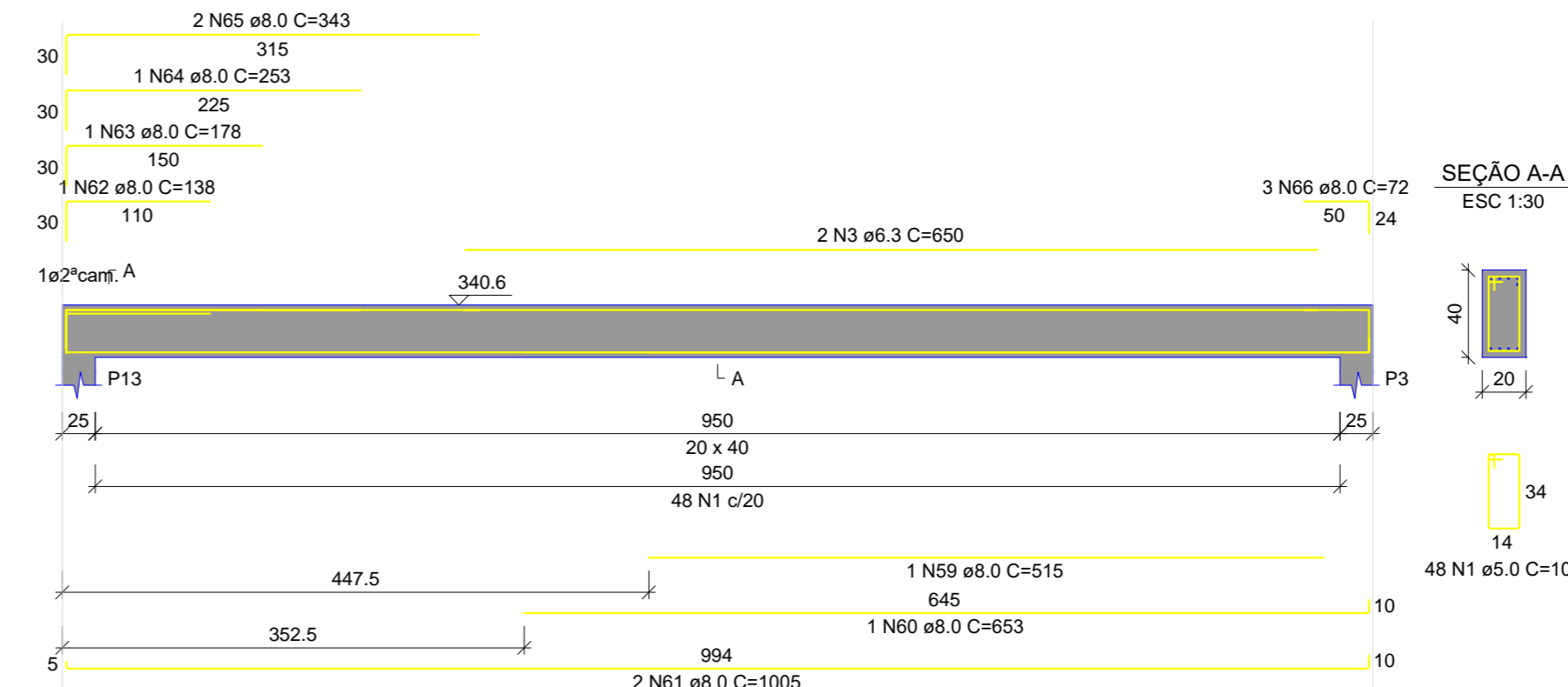


SEÇÃO A-A  
ESC 1:30

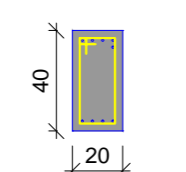


**VS7**

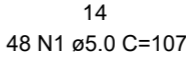
ESC 1:50



SEÇÃO A-A  
ESC 1:30



SEÇÃO A-A  
ESC 1:30



RELAÇÃO DO AÇO

AÇO	N	DIAM (mm)	QUANT	C.UNIT (cm)	C.TOTAL (cm)
CA60	1	5.0	354	107	37878
CA50	2	5.0	108	127	13716
	3	6.3	2	650	1300
	4	8.0	1	235	235
	5	8.0	2	170	340
	6	8.0	2	701	1402
	7	8.0	1	330	330
	8	8.0	2	914	1828
	9	8.0	2	245	490
	10	8.0	2	358	716
	11	8.0	1	873	873
	12	8.0	1	853	853
	13	8.0	2	1198	2396
	14	8.0	2	866	1732
	15	8.0	4	711	2844
	16	8.0	4	715	2860
	17	8.0	1	285	285
	18	8.0	3	190	570
	19	8.0	2	696	1392
	20	8.0	1	320	320
	21	8.0	2	911	1822
	22	8.0	3	351	1053
	23	8.0	1	195	195
	24	8.0	2	898	1796
	25	8.0	2	1198	2396
	26	8.0	2	898	1796
	27	8.0	6	725	4350
	28	8.0	1	295	295
	29	8.0	2	615	1230
	30	8.0	1	104	104
	31	8.0	1	415	415
	32	8.0	1	475	475
	33	8.0	1	119	119
	34	8.0	2	1198	2396
	35	8.0	2	870	1740
	36	8.0	1	405	405
	37	8.0	2	595	1190
	38	8.0	2	114	228
	39	8.0	2	633	1266
	40	8.0	1	123	123
	41	8.0	1	283	283
	42	8.0	2	800	1600
	43	8.0	1	280	280
	44	8.0	2	535	1070
	45	8.0	1	412	412
	46	8.0	1	230	230
	47	8.0	1	117	117
	48	8.0	2	1171	2342
	49	8.0	2	200	400
	50	8.0	1	90	90
	51	8.0	2	115	230
	52	8.0	2	465	930
	53	8.0	2	185	370
	54	8.0	1	215	215
	55	8.0	1	246	246
	56	8.0	1	261	261
	57	8.0	1	409	409
	58	8.0	3	484	1452
	59	8.0	1	515	515
	60	8.0	1	653	653
	61	8.0	2	1005	2010
	62	8.0	1	138	138
	63	8.0	1	178	178
	64	8.0	1	253	253
	65	8.0	2	342	684
	66	8.0	3	72	216

RESUMO DO AÇO

AÇO	DIAM (mm)	C.TOTAL (m)	PESO + 10% (kg)
CA50	6.3	13	3.5
CA60	8.0	584.1	253.5
CA60	5.0	515.9	87.5
PESO TOTAL (kg)			
CA50			257
CA60			87.5

Volume de concreto (C-25) = 7.77 m³  
Área de forma = 96.11 m²

**EDIFICAÇÃO PÚBLICA - AMPLIAÇÃO** Prefeitura Municipal de **Rolante**

Projeto Estrutural material: Alvenaria

obra: Casa da Colônia

local: Av. Getúlio Vargas, 131 - Centro

prancha: Vigas Superiores nº VS 01

extensão/área: 259,94 m² escala: indicada unidade: centímetro data: Abril/2020

proprietário: Régis Luiz Zimmer Prefeito Municipal responsável técnico: Jainara Garcia Fischer Eng. Civil CREA/RS 237284